

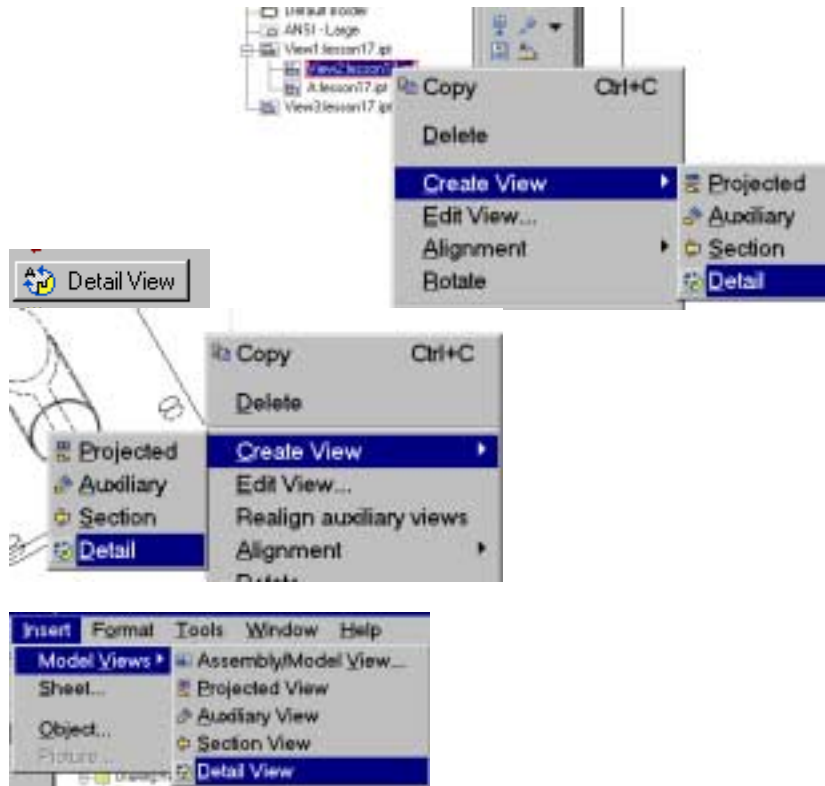
Lesson 23

Creating Detail Views

Learning Objective

By the conclusion of this lesson, the user will be able to create detail views.

Using the basic auxiliary drawing we created, we will add a detail view.



Creating a Detail View

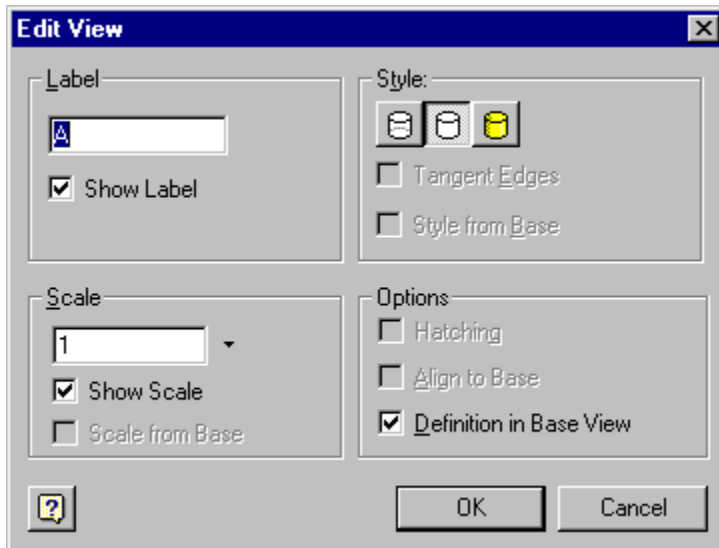
To add a Detail View, the user can:

- ◆ Select the Detail View tool from the Drawing Management tools.
- ◆ Select the view where the detail is to be added, right click and select Create View->Detail
- ◆ Go to Insert->Model Views->Detail View from the menu.
- ◆ Go to the browser, select the source view for the detail view, right click and select Create View->Detail



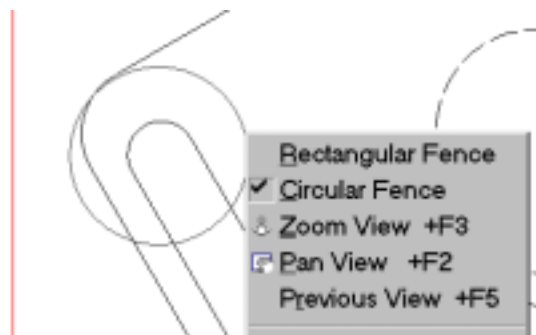
TIP: To set a different fence shape, right-click and select the fence shape from the menu before clicking to indicate the outer boundary.

1. Click the Detail View button.
2. Select an existing view as the base .
3. In the dialog box, set the label, scale, and display style for the view. If you do not change these settings, the default settings will be assigned.
4. In the graphics window, click to indicate the center of the desired detail, then move the cursor and click to indicate the outer boundary of the detail.
5. Move the preview to the desired location and click to place the view.

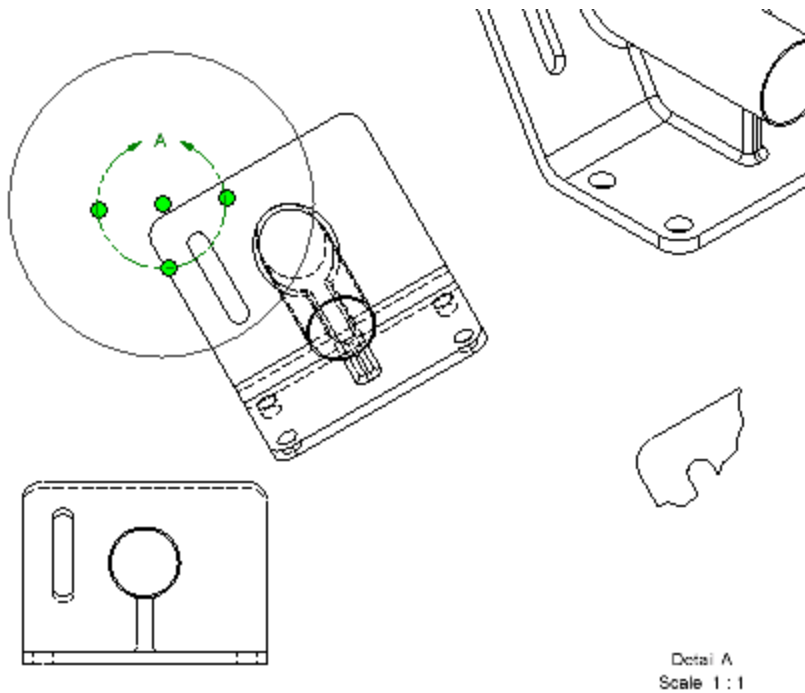


Fill in the dialog box as shown.

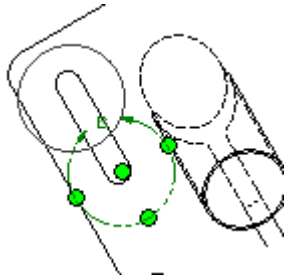
Pick to place the circle for the Detail View and then drag and select with the mouse to place the Detail View.



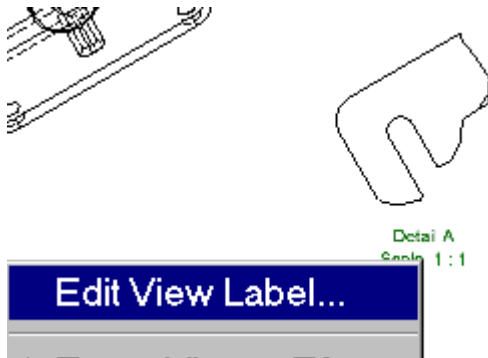
To change from a Circular Fence to a Rectangular Fence, right click and select the desired mode after picking the center point for the detail view.



Using the select tool, the user can select the detail circle and stretch it to enlarge it or shrink it. The Detail View will automatically update.

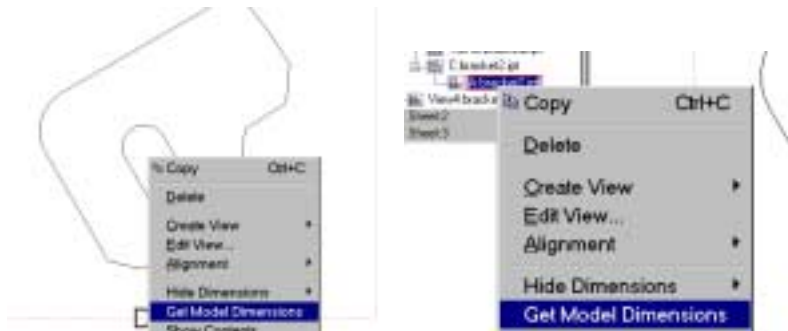


The user can also move a detail view. Simply select the center of the circle, hold down the mouse and drag to the new location. The detail view will automatically update.



Modifying a View Label

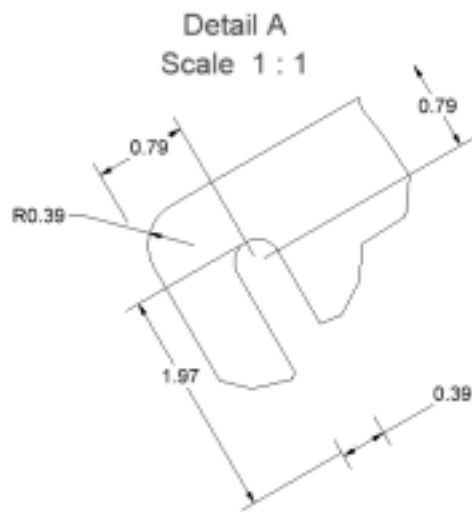
To edit the View Label, select, right-click and select 'Edit View Label'.
The View Label can be moved easily by selecting with a mouse and dragging it to a new position.



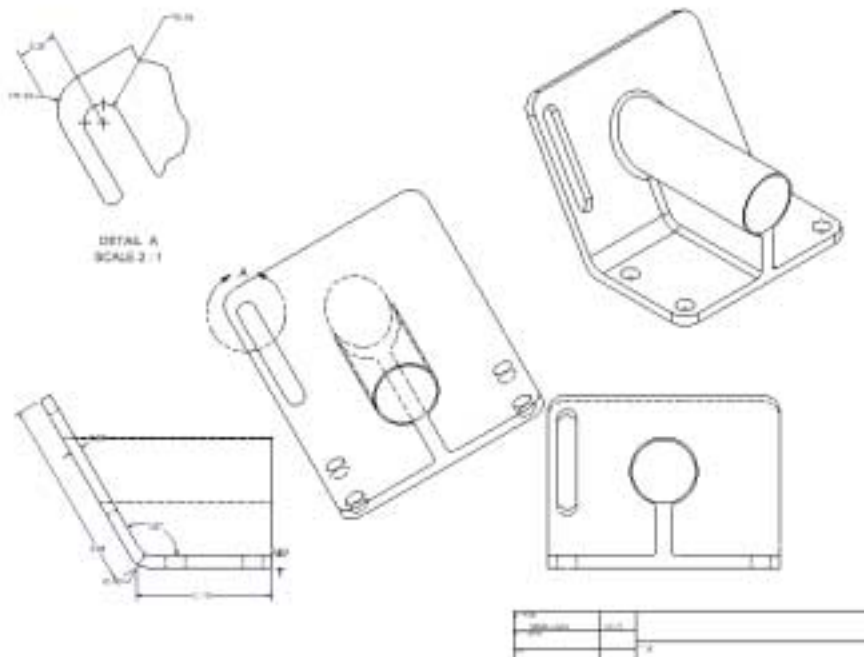
Dimensioning a Detail View

To dimension the Detail View, the user can:

- ◆ Select the view in the drawing area, right click and select 'Get Model Dimensions'
- ◆ Select the view in the browser, right click and select 'Get Model Dimensions'



Use the standard methods to arrange and edit the dimensions.



Our detailed drawing.
Save the drawing as 'detail1.idw'.

Notes: